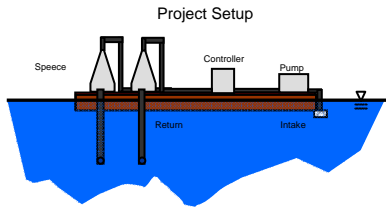


Savannah Harbor ReOxygenation Demonstration Project Georgia Ports Authority

MACTEC Engineering and Consulting Inc. (MACTEC) through the Georgia Ports Authority (GPA) will conduct the Savannah Harbor ReOxygenation Demonstration



Project (ReOx Project) from mid June through late September 2007. The ReOx project is designed to demonstrate that oxygenation capacity lost due to the planned harbor deepening project may be mitigated using a supplemental oxygen addition system. The ReOx project will inject up to 30,000

pounds per day of pure oxygen into the deepened navigation channel using a barge-mounted reoxygenation unit called the Speece Cone. The reoxygenation system will be mounted on a stationary barge at the TIC property (just upstream from the Convention Center) on Hutchinson Island.

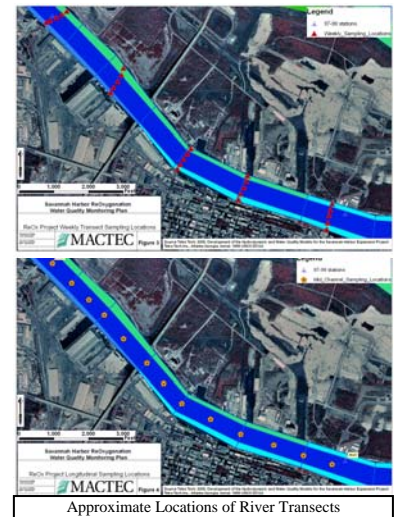
As part of the ReOx Project, extensive water quality monitoring will take place. Water quality measurements will be taken using YSI Data Sondes. Parameters that will be monitored include: dissolved oxygen (DO), pH, specific conductivity, temperature, salinity, and depth.

Water quality monitoring will be conducted at three stationary points in the river



(at GPA Berth 20, at the ReOx barge location, and the US Army Corps of Engineers (USACE) Dock). Water quality monitoring sondes will be deployed at 1 meter below the surface, near mid depth, and 1 meter from the bottom at each location. Redundant sondes will also be deployed as a data check and to minimize potential data loss during the project. A data logging station control box will be placed at each location. Personnel will be deployed regularly (on average 4 times per week) to replace and recalibrate the sondes.

In addition to the stationary continuous-monitoring locations, DO and water quality measurements will be taken periodically in the river at various depths along horizontal and vertical transects. There will be five horizontal transects (at Berth 20, upstream of the Talmadge Bridge, at the ReOx barge location, at the convention center, and at the USACE Dock). Sampling will be performed centered on high or low slack tides. The vertical transect will be along the center of the navigation channel and will include 13 locations extending from Berth 20 to the USACE Dock. River transect sampling will generally occur on Monday and Tuesday of each week starting July 2 and extending through September 11, 2007. Sampling will not occur on September 4 but will occur on September 5 and 6, 2007 due to the Labor Day holiday.



MACTEC will use two boats (registration numbers: 0.N.1115711 (named Tidewater) or GA6292TV a 17 foot 6 inch Champion ZDI 49202C000 runabout) depending on weather conditions for the sampling project. If a different boat is needed due to mechanical failure or other unforeseen circumstances, then MACTEC will provide GPA with the description and registration number so that the appropriate agencies may be notified directly.

For additional information, please feel free to contact Margaret Tanner, MACTEC Project Manager at 770-421-7032 (office), 770-605-3957 (cell) or metanner@mactec.com; or Hope Moorer, Georgia Ports Authority at 912-964-3883 (office), 912-663-7615 (cell) or hmoorer@gaports.com.



Speece Cone



Multiparameter Data Sondes